



SPC 120/240



Small Footprint: 24" wide, 36" tall, 9" deep

Everything in a single cabinet

- **Choice of Inverter: TrueSineWave™ TSW2212, TSW3224 or TSW3648**
- **T80 TurboCharger™ charge controller**
- **DC Breakers for PV in and T80 out**
- **AC Breakers and Inverter bypass**
- **PV Ground Fault Protection**
- **AC and DC Lightning Arrestors**
- **System Monitor and Control module**
- **Completely factory wired**
- **Room for additional breakers**

Clean Professional Appearance

Save time on every installation – Factory wired and labeled for code-compliance

Easy maintenance – Designed for simple changeout of inverter or charge controller.

SOLAR POWER CENTER

Complete Off-Grid PV electronics in 1 enclosure

The entire electronics for a battery based PV system in a single cabinet. The Apollo Solar SPC 120/240 Solar Power Center is a complete Off-Grid PV Power System, factory wired and ready for quick installation. The Inverter, Charge Controller, System Monitor and all the circuit breakers are inside a single enclosure. The installer need only connect the PV Input, Battery Cables, AC Load and generator input.



Lower costs using a Factory-Built Appliance

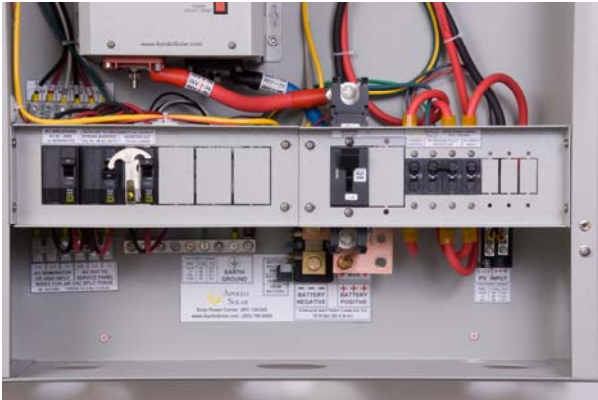
The SPC is a single box that provides both 120 and 240 volt, 50 or 60Hz AC power for the world-wide markets and can be easily installed into tight spaces. It accommodates the Apollo Solar TrueSineWave™ Inverter and T80 TurboCharger™. The DC and AC circuit breakers and System Monitor are factory installed and wired.

The best features needed for reliable operation

The SPC features the TrueSineWave™ Split Phase Inverter, the T80 MPPT Charge Controller, the SPC front-panel System Display, and integral DC and AC breakers, Ground Fault Protection, Lightning Arrestors, and generator start/operation capability, all in a clean, compact 3-foot by 2-foot enclosure that stands only 9 inches from the wall. The SPC includes the Apollo Solar patent-pending MPPT energy harvest and built-in TriMetric™ battery state-of-charge metering in a single unit can process up to 5300 watts of PV power. The SPC 120/240 is the turn-key solution for remote, Off-Grid PV applications. It supports flooded lead-acid, gel, and absorbed-glass-mat batteries in 12, 24, and 48 VDC configurations providing four-stage charging with fail-safe, calculated default settings as well as adjustable set points for all parameters.

Simply connect PV input, Battery cables & AC

The wiring box area shown in the photo below has clearly labeled connectors for the PV array input, the battery cables and the AC input/output.



System Control Panel -- 4 line, 20 character backlit LCD screen displays system diagnostic information for all devices connected to the network and gives a single point to monitor an entire SPC Power System and to set-up the inverter.

System Control / Monitor:



The SPC 120/240 ships fully assembled with:

- Powder coated steel cabinet and simple mounting hardware
- Three 35 A, 120/240 Vac, two-pole, square-D, Type QOU, DIN-rail AC breakers for AC input, bypass, and AC load
- One Airpax 250A 3/8" stud DC main inverter breaker
- One ground terminal bus bar
- One 2-terminal distribution block for PV input wires
- One 500Amp/50mV shunt with Apollo Shunt Board
- Internal Delta lightning arrestors on the DC and AC inputs
- One negative terminal bus plate
- One battery positive terminal bus plate
- DC section is wired with ultra-flexible #4 AWG
- Inverter DC input wires are ultra-flexible #2/0 AWG
- AC wiring is ultra-flexible #10 AWG
- Room to expand - 3 positions for two-pole Square D type QOU AC breakers and 3 positions for DC breakers.

SOLAR POWER CENTER SPECIFICATIONS

See the individual spec sheet for details of the T80 TurboCharger™, TrueSineWave Inverters™ and Remote Displays.

Battery voltages	12, 24 or 48 VDC nominal
Input PV range	Up to 70 Amps, 16V to 112VDC operating. 140VDC Maximum Open Circuit Voltage
Max PV array power	5200 Watts (maximum when equalizing a 48v battery to 64v at 80 Amps)
System Monitor Display ...	LCD shows State-of-Charge in a fuel gauge style bar graph and % Full, Amp-hours, Watt-hrs remaining, present charge current and load current. The inverter output is displayed as AC voltage, frequency and output power.
Auxiliary relays	The T80 TurboCharger has two independent SPST relays to control external devices. Configurable as NO or NC. Contact rating ½ Amp, 50 VDC.
Data Comm Options	ASNET Apollo Network available for optional Wireless link to Remote Display.
Connectors	PV input: Distribution Block accepts #14 to 1/0. AC: Terminal Strip accepts #14 to #8. Battery Terminals: 3/8" hex bolts accept up to a pair of #4/0 AWG cables lugs.
Unit dimensions	24" X 36" X 9" (61cm x 91.5cm x 22.9cm). Shipping: 28" x 40" x 13"
Weight	Unit: 66 lbs. (30kg) Shipping weight: 75 lbs. (34kg)
Environmental rating	Indoor Type 1. Optional enclosure: NEMA 4 / IP66 rated fully enclosed cabinet.
Optional Accessories	Wireless Remote Monitor, Wired Remote Monitor, Generator Start Module



APOLLO SOLAR

23 F. J. Clarke Circle
Bethel, CT 06801
(203) 790-6400

www.ApolloSolar.com